



## INDIAN SCHOOL AL WADI AL KABIR



<b>CLASS: VI</b>	<b>DEPARTMENT: SCIENCE</b> <b>2022 - 2023</b>	<b>DATE: 14/09/2022</b>
<b>TEXTBOOK Q &amp; A</b>	<b>TOPIC:GETTING TO KNOW PLANTS</b>	<b>NOTE: A4 FILE FORMAT</b>
<b>NAME OF THE STUDENT:</b>	<b>CLASS &amp; SEC:</b>	<b>ROLL NO.</b>

### EXERCISES

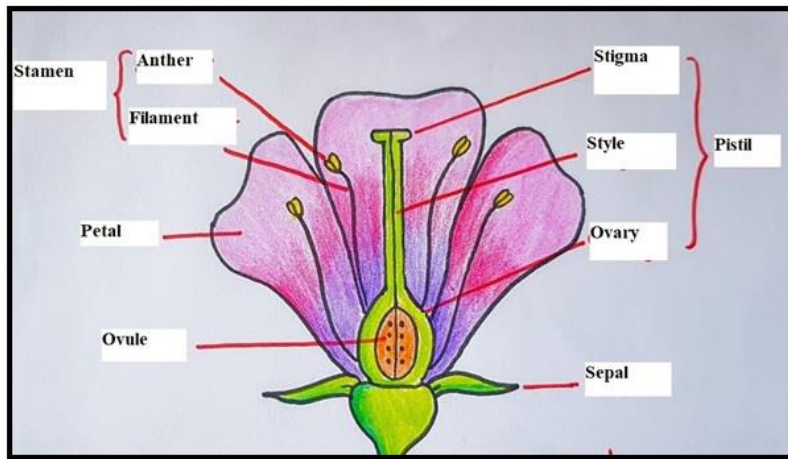
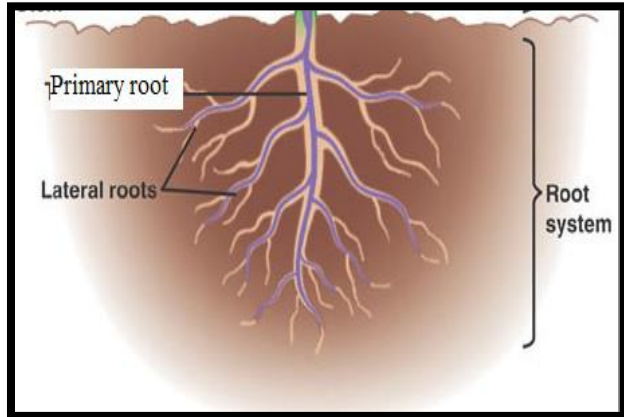
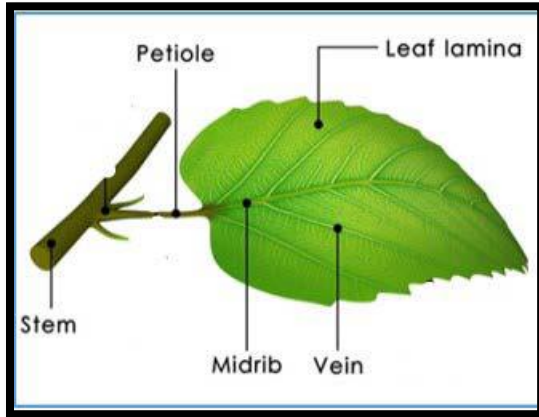
**Q 1.** Correct the following statements and rewrite them in your notebook.

- (a) Stem absorbs water and minerals from the soil.
- (b) Leaves hold the plant upright.
- (c) Roots conduct water to the leaves.
- (d) The number of petals and sepals in a flower is always equal.
- (e) If the sepals of a flower are joined together, its petals are also joined together.
- (f) If the petals of a flower are joined together, then the pistil is joined to the petal.

**Ans:**

- (a) Roots absorb water and minerals from the soil.**
- (b) Stems hold the plant upright.**
- (c) Stem conducts water to the leaves.**
- (d) The number of petals and sepals in a flower may not be always equal.**
- (e) If the sepals of a flower are joined together, its petals are not necessarily joined together.**
- (f) If the petals of a flower are joined together, then the pistil is not necessarily joined to the petal.**

Q 2. Draw (a) a leaf, (b) a taproot and (c) a flower, you have studied for Table 7.3.



Q 3. Can you find a plant in your house or in your neighborhood, which has a long but weak stem? Write its name. In which category would you classify it?

**Ans. Yes, we found a money plant in our house which has a long but weak stem. It belongs to the climber category.**

Q. 4. What is the function of a stem in a plant?

**Ans: A stem performs the following functions: (i) It holds the plant upright. (ii) It conducts water from roots to different parts of the plant. (iii) It transports food from leaves to different parts of the plant. (iv) It bears leaves, flowers and fruits. (v) In some plants, it is also modified to store food.**

Q. 5. Which of the following leaves have reticulate venation?

Wheat, Tulsi, Maize, Grass, Coriander (*dhania*), China rose

**Ans.**

**Wheat - Parallel venation**

**Tulsi - Reticulate venation**

**Maize – Parallel venation**

**Grass - Parallel venation**

**Coriander - Reticulate venation**

**China rose - Reticulate venation.**

Q. 6. If a plant has fibrous roots, what type of venation are its leaves likely to have?

**Ans: If a plant has a fibrous root system, its leaves will have parallel venation.**

Q. 7. If a plant has leaves with reticulate venation, what kind of roots will it have?

**Ans: If a plant has leaves with reticulate venation, it will have a tap root system.**

Q. 8. Is it possible for you to find out whether a plant has taproot or fibrous roots by looking at the impression of its leaf on a sheet of paper?

**Ans: Yes, it is possible for us to find out whether a plant has tap roots or fibrous roots by looking at the impression of its leaf on a sheet of paper. If the plant has fibrous roots, then its leaves have parallel venation and if the plant has tap roots, then its leaves have reticulate venation.**

Q. 9. Write the names of the parts of a flower.

**Ans: The names of various parts of a flower from outside to inside are: (i) Sepals (ii) Petals (iii) Stamen comprises of anther and filament. (iv) Pistil comprises of stigma, style and ovary. Ovary consists of small bead like structures called ovules.**

10. Which of the following plants have you seen? Of those that you have seen, which one have flowers? Grass, maize, wheat, chilli, tomato, tulsi, pipal, shisham, banyan, mango, jamun, guava, pomegranate, papaya, banana, lemon, sugarcane, potato, groundnut

**Ans:**

SR. NO	Name of the plant	Whether seen	Whether have flowers	
			Yes	No
1	Grass	yes	Yes	
2	Maize	yes	Yes	
3	Wheat	Yes	Yes	
4	Chilli	Yes	Yes	
5	Tomato	Yes	Yes	
6	Tulsi	Yes	Yes	
7	Pipal	Yes	Yes	
8	Shisham	Yes	Yes	
9	Banyan	Yes	Yes	
10	Mango	Yes	Yes	
11	Jamun	Yes	Yes	
12	Guava	Yes	Yes	
13	Pomegranate	Yes	Yes	
14	Papaya	Yes	Yes	
15	Banana	Yes	Yes	
16	Lemon	Yes	Yes	
17	Sugarcane	Yes	Yes	

18	Potato	Yes		No
19	Groundnut	yes		No

11. Name the part of the plant which produces its food. Name this process.

**Ans: Leaves produce food for the plant through a process called photosynthesis.**

12. In which part of a flower you are likely to find the ovary?

**Ans: Ovary is the lowermost and swollen part of the pistil.**

13. Name two flowers, each with joined and separate sepals.

**Ans: Flowers with joined sepals: (i) Datura (ii) Tomato**

**Flowers with separate sepals: (i) Rose (ii) Jasmine (iii) Mustard.**

**Prepared by:** Mrs. Alysia Fernandes

**Checked by:** HOD - SCIENCE